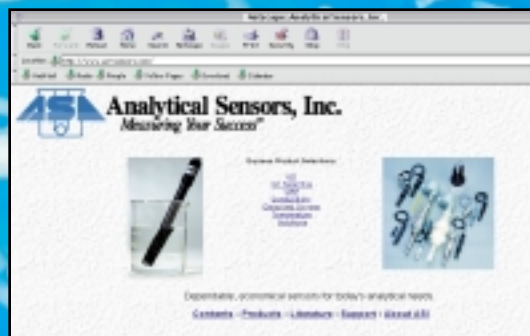


pH & ORP Electrodes Authorized Distributor www.clarksonlab.com

POOL & SPA PRODUCTS



ASI's 15,000 square foot, purpose-built facility in Sugar Land, Texas has increased our manufacturing efficiency and output.



Visit our web site at www.asi-sensors.com for product updates, selections, literature and support.



12800 Park One Drive • Sugar Land, TX 77478
Tel: 281.565.8818 • Fax: 281.565.8811 • www.asi-sensors.com



Analytical Sensors, Inc.
Measuring Your SuccessSM

54 Series pH & ORP Electrodes

The ASI 54 Series inline electrodes are designed for mounting in a standard 1/2" connection for continuous pH and ORP flow-through monitoring. They are constructed of ABS plastic and feature ASI's double-junction gel-filled reference. For ease of installation and maintenance, a detachable cable with color-coded boots, threaded soaking bottle and removable bulb guard are available. Color-coded caps assist in differentiating pH (blue) from ORP (red).

Model HE54 pH Electrode

Temp. Range	0-80° C
Reading in pH 7.00	0 +/-20 millivolts (at 25° C)
pH Range	0-14 or 0-12 pH
Impedance	Less than 200 meg ohms
Bulb Guard	Removable
Connector	BNC standard
Junction	Double
Slope	Greater than 97%
Insertion Depth	3/4 inch
Insertion Threads	1/2 inch NPT
Cable	Low noise, coax

Model RE54 ORP Electrode

Temp. Range	0-80° C
Reading in pH 7.00 saturated with quinhydrone	86 +/-20 millivolts (at 25° C)
Sensing Element	High purity platinum band
Bulb Guard	Removable
Connector	BNC standard
Junction	Double
Slope	Greater than 96%
Insertion Depth	3/4 inch
Insertion Threads	1/2 inch NPT
Cable	Low noise, coax

HE54 pH and RE54 ORP Features:

- Bulb protection provided by threaded storage bottle
- Female BNC allows for quick disconnecting from system
- Removable guard allows easy cleaning
- Color-coded caps for easy identification



35 Series pH & ORP Electrodes

The ASI 35 Series electrodes are designed for on-line or portable measurements of pH and ORP monitoring. They are constructed of a durable body and feature ASI's single- or double-junction reference. For ease of installation, the electrodes are color coded—blue for pH and red for ORP. A protective soaker bottle is included. The 35 series electrode is versatile enough to interface with most portable meters, and adds reliability to your testing system.

Model H035 pH Electrode

Temp Range	0-80° C
Reading in pH 7.00	0 +/-20 millivolts (at 25° C)
pH Range	0-14 or 0-12 pH
Impedance	Less than 200 meg ohms
Connector	BNC standard
Junction	Single or double
Slope	Greater than 97%
Overall Length	150 mm
Body Diameter	12 mm
Cap Diameter	16 mm
Cable	Low noise, coax

H035 pH and R035 ORP Features:

- Bulb protection provided by sealed storage bottle
- Color-coded bodies for easy identification
- Durable design for pool and spa applications

Model R035 ORP Electrode

Temp. Range	0-80° C
Reading in pH 7.00 saturated with quinhydrone	86 +/-20 millivolts (25° C)
Sensing Element	High purity platinum band
Connector	BNC standard
Junction	Single or double
Slope	Greater than 96%
Overall Length	150 mm
Body Diameter	12 mm
Cap Diameter	16 mm
Cable	Low noise, coax

ASI sensors perform.