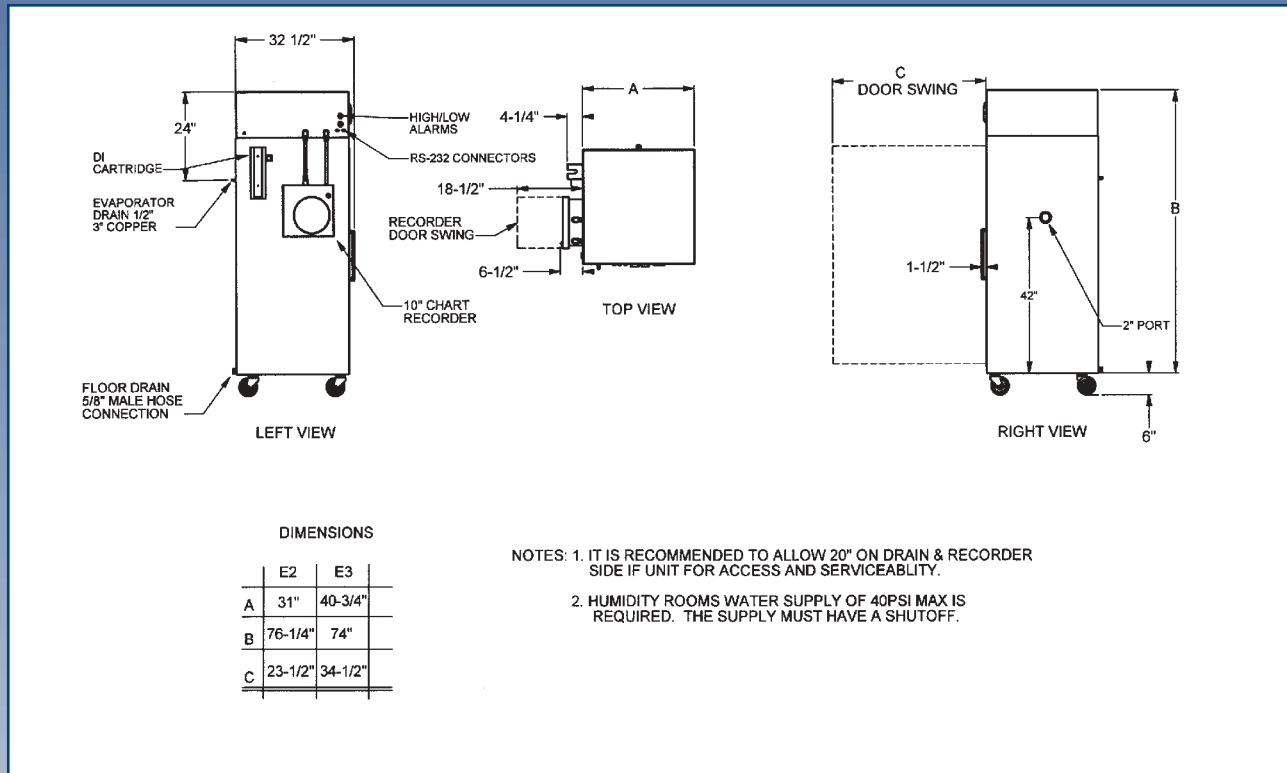


Lab-Line Environmental Chambers



Reach-In Environette®



Models Recommended for Stability Testing of Drugs and Pharmaceuticals

Long Term Tests (25°C—60% RH) Chambers with heat and refrigeration	Accelerated Tests (40°C—75% RH) Chambers with heat only
E(C)22560	E(C)24075
E(C)32560	E(C)34075

PRODUCT SPECIFICATIONS							
Capacity	Exterior Dimensions Inches (cm)			Chamber Dimensions Inches (cm)			Weight Lb. (kg)
	W	H	D	W	H	D	
29 cu. ft. (821 l)	40.75 (104)	80 (203)	32.5 (84)	36.75 (93.3)	52.75 (135)	26 (66)	600 (272)
19 cu. ft. (538 l)	31 (79)	82 (208)	32.5 (84)	26.75 (67.9)	52.75 (135)	26 (66)	450 (204)

ORDERING INFORMATION AND ACCESSORIES		US List Price
Model #		<i>For a quotation, please refer to the Environmental Chamber Questionnaire following the Chamber section on p. 48.</i>
810-123-02	Extra Shelf, 36" W x 23.2" D (29 cu. ft. models)	
810-390-02	Extra Shelf, 25.5" W x 23.2" D (19 cu. ft. models)	
585-036-00	Replacement deionization cartridge (1 supplied with humidity units)	