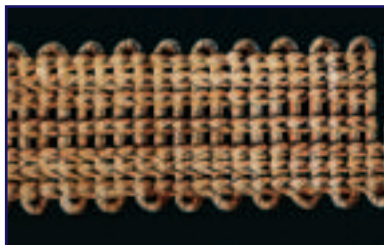


Thermolyne Heating Tapes/Mats



Fibrox™, Samox™ and Grounded



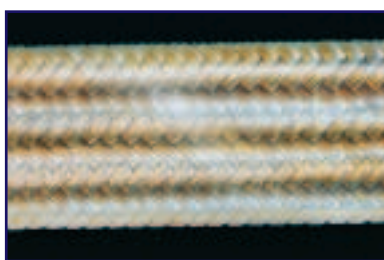
Standard

Standard Insulated Tape is constructed of finely-stranded resistant wires doubly insulated with braided yarns and knitted into flat tapes. Extremely flexible, the heat tape can be tightly wrapped onto your vessel, providing excellent heat transfer. Fibrox tapes can be used for temperatures to 480°C; Samox tapes to 760°C.



Heavy Insulated

This heavy insulated heating tape is constructed of standard insulated, braided heating tape with knitted, heavy fabric covering. Designed for heavier-duty applications where abrasion resistance and heating element protection are required. Designed for direct contact on conductive surface. Fibrox tapes can be used for temperatures to 480°C; Samox tapes to 760°C.



Wide Heavy Insulated

The wide heavy insulated heating tape is constructed of two or more standard insulated heating tapes sewn between two layers of cloth. Ideal for wider surface areas requiring a fast and efficient direct contact heat source. Designed for direct contact on conductive surface. Fibrox tapes can be used for temperatures to 480°C; Samox tapes to 760°C.



For information on controllers, see page 119.



For information on controllers, see page 119.

ORDERING INFORMATION

Model #	Dimensions Inches (cm x m)	Watts	Volts	US List Price
Fibrox Standard Insulated - Temperatures to 480°C (900°F)				
BM0041-006	.43" x 8" (1.09 x 0.2)	35	120	\$39.00
BM0031-010	.39" x 12" (.99 x 0.3)	45	120	\$39.00
B00051-020	.5" x 2' (1.27 x 0.6)	105	120	\$41.00
B00051-040	.5" x 4' (1.27 x 1.22)	210	120	\$46.00
B00051-060	.5" x 6' (1.27 x 1.83)	310	120	\$61.00
B00051-080	.5" x 8' (1.27 x 2.44)	420	120	\$67.00
B00051-100	.5" x 10' (1.27 x 3.05)	520	120	\$80.00
B00101-020	1" x 2' (2.5 x 0.6)	210	120	\$49.00
B00101-040	1" x 4' (2.5 x 1.22)	420	120	\$62.00
B00101-060	1" x 6' (2.5 x 1.83)	620	120	\$70.00
B00101-080	1" x 8' (2.5 x 2.44)	830	120	\$98.00
B00102-100*	1" x 10' (2.5 x 3.05)	1040	240	\$118.00
Fibrox Heavy Insulated - Temperatures to 480°C (900°F)				
BIH051-020	.5" x 2' (1.27 x 0.6)	105	120	\$49.00
BIH051-040	.5" x 4' (1.27 x 1.22)	210	120	\$65.00
BIH051-060	.5" x 6' (1.27 x 1.83)	310	120	\$77.00
BIH051-080	.5" x 8' (1.27 x 2.44)	420	120	\$94.00
BIH051-100	.5" x 10' (1.27 x 3.05)	520	120	\$113.00
BIH101-020	1" x 2' (2.5 x 0.6)	210	120	\$62.00
BIH101-040	1" x 4' (2.5 x 1.22)	420	120	\$88.00
BIH101-060	1" x 6' (2.5 x 1.83)	620	120	\$136.00
BIH101-080	1" x 8' (2.5 x 2.44)	830	120	\$162.00
BIH102-100*	1" x 10' (2.5 x 3.05)	1040	240	\$188.00

Model #	Dimensions Inches (cm x m)	Watts	Volts	US List Price
Fibrox Wide Heavy Insulated - Temperatures to 480°C (900°F)				
BIH171-020	1.75" x 2' (4.44 x 0.6)	209	120	\$120.00
BIH171-040	1.75" x 4' (4.44 x 1.22)	418	120	\$176.00
BIH171-060	1.75" x 6' (4.44 x 1.83)	627	120	\$233.00
BIH171-080	1.75" x 8' (4.44 x 2.44)	836	120	\$276.00
BIH171-100	1.75" x 10' (4.44 x 3.05)	1045	120	\$315.00
BIH251-020	2.5" x 2' (6.35 x 0.6)	313	120	\$139.00
BIH251-040	2.5" x 4' (6.35 x 1.22)	627	120	\$193.00
BIH251-060	2.5" x 6' (6.35 x 1.83)	940	120	\$277.00
BIH251-080*	2.5" x 8' (6.35 x 2.44)	1254	120	\$350.00
BIH251-100*	2.5" x 10' (6.35 x 3.05)	1576	120	\$381.00
BIH321-020	3.25" x 2' (8.3 x 0.6)	418	120	\$178.00
BIH321-040	3.25" x 4' (8.3 x 1.22)	836	120	\$224.00
BIH321-060*	3.25" x 6' (8.3 x 1.83)	1254	120	\$326.00
BIH321-080*	3.25" x 8' (8.3 x 2.44)	1672	120	\$446.00
BIH321-100*	3.25" x 10' (8.3 x 3.05)	2090	120	\$494.00

* Tapes supplied without plugs. Tapes are available with leads on same end of tape. Call for more information. All tapes are provided without controller. You must use a suitable controller or damage to your tape will occur. See controllers following heating mantle section. All tapes .5" or wider are available in 240 volts. Other tape dimensions are available. Price and availability on request. DO NOT OVERLAY TAPES.

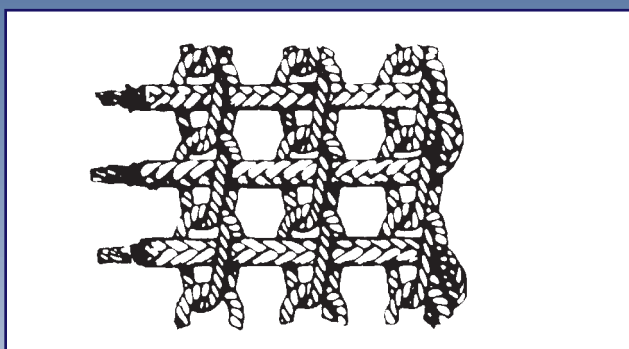
Thermolyne Heating Tapes/Mats



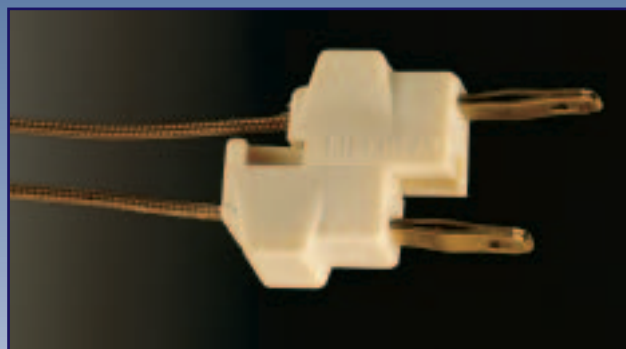
Fibrox™, Samox™ and Grounded

Grounded Heavy Insulated Fibrox Heat Tapes

These heavy insulated grounded heating tapes consist of a resistance wire wrapped in a layer of kapton tape, braided by two more layers of fiberglass insulation, then braided by a ground wire and covered with Fibrox fabric. Designed for strict grounding requirements, these tapes work well for direct contact on conductive surfaces.



Tapes are constructed with two foot long high temperature, insulated lead wires emerging from opposite ends of the heating tape into an integrally molded plug for easy connection to your controller.



- 35 - 40 gauge finely stranded resistance wire.
- Double-braided Fiberglass yarn insulation
- Chain-knitted Fiberglass weft cords

ORDERING INFORMATION

Model #	Dimensions Inches (cm x m)	Watts	Volts	US List Price
Grounded Fibrox Heavy Insulated - Temperature to 316°C (600°F)				
BIH101-020LG	1" x 2' (2.5 x 0.6)	120	230	\$163.00
BIH101-040LG	1" x 4' (2.5 x 1.2)	120	460	\$173.00
BIH101-060LG	1" x 6' (2.5 x 1.83)	120	690	\$197.00
BIH101-080LG	1" x 8' (2.5 x 2.44)	120	920	\$220.00
BIH101-100LG	1" x 10' (2.5 x 3.05)	120	1150	\$237.00
BIH102-020LG	1" x 2' (2.5 x 0.6)	240	210	\$163.00
BIH102-040LG	1" x 4' (2.5 x 1.22)	240	420	\$171.00
BIH102-060LG	1" x 6' (2.5 x 1.83)	240	620	\$197.00
BIH102-080LG	1" x 8' (2.5 x 2.44)	240	830	\$219.00
BIH102-100LG*	1" x 10' (2.5 x 3.05)	240	1040	\$236.00
Samox Standard Insulated - Temperatures to 760°C (1400°F)				
BW0051-020	.5" x 2' (1.27 x 0.6)	160	120	\$41.00
BW0051-040	.5" x 4' (1.27 x 1.22)	310	120	\$50.00
BW0051-060	.5" x 6' (1.27 x 1.83)	470	120	\$67.00
BW0051-080	.5" x 8' (1.27 x 2.44)	620	120	\$77.00
BW0052-100*	.5" x 10' (1.27 x 3.05)	780	240	\$93.00
BW0052-120*	.5" x 12' (1.27 x 3.66)	940	240	\$114.00
BW0101-020	1" x 2' (2.5 x 0.6)	310	120	\$50.00
BW0101-040	1" x 4' (2.5 x 1.22)	620	120	\$68.00
BW0102-060*	1" x 6' (2.5 x 1.83)	940	240	\$92.00
BW0102-080*	1" x 8' (2.5 x 2.44)	1250	240	\$110.00

NOTE: All tapes are provided without controller. You must use a suitable controller or damage to your tape will occur. See controllers following heating mantle section. All tapes .5" or wider are available in 240 volts. Other tape dimensions are available. Price and availability on request. DO NOT OVERLAY TAPES.

Model #	Dimensions Inches (cm x m)	Watts	Volts	US List Price
Samox Heavy Insulated - Temperatures to 760°C (1400°F)				
BWH051-020	.5" x 2' (1.27 x 0.6)	160	120	\$56.00
BWH051-040	.5" x 4' (1.27 x 1.22)	310	120	\$68.00
BWH051-060	.5" x 6' (1.27 x 1.83)	470	120	\$88.00
BWH051-080	.5" x 8' (1.27 x 2.44)	620	120	\$103.00
BWH052-100*	.5" x 10' (1.27 x 3.05)	780	240	\$142.00
BWH052-120*	.5" x 12' (1.27 x 3.66)	940	240	\$156.00
BWH101-020	1" x 2' (2.5 x 0.6)	310	120	\$70.00
BWH101-040	1" x 4' (2.5 x 1.22)	620	120	\$94.00
BWH102-060*	1" x 6' (2.5 x 1.83)	940	240	\$152.00
BWH102-080*	1" x 8' (2.5 x 2.44)	1250	240	\$155.00
Samox Wide Heavy Insulated - Temperatures to 760°C (1400°F)				
BWH171-020	1.75" x 2' (4.44 x 0.6)	313	120	\$145.00
BWH171-040	1.75" x 4' (4.44 x 1.22)	627	120	\$197.00
BWH171-060	1.75" x 6' (4.44 x 1.83)	940	120	\$267.00
BWH171-080*	1.75" x 8' (4.44 x 2.44)	1254	120	\$350.00
BWH172-100*	1.75" x 10' (4.44 x 3.05)	1570	240	\$342.00
BWH251-020	2.5" x 2' (6.35 x 0.6)	470	120	\$173.00
BWH251-040	2.5" x 4' (6.35 x 1.22)	940	120	\$252.00
BWH251-060*	2.5" x 6' (6.35 x 1.83)	1411	120	\$349.00
BWH251-080*	2.5" x 8' (6.35 x 2.44)	1881	120	\$421.00
BWH252-100*	2.5" x 10' (6.35 x 3.05)	2351	240	\$551.00
BWH321-020	3.25" x 2' (8.3 x 0.6)	627	120	\$199.00
BWH321-080*	3.25" x 8' (8.3 x 2.44)	2508	120	\$540.00
BWH322-100*	3.25" x 10' (8.3 x 3.05)	3135	240	\$642.00

* Tapes supplied without plugs.