

Thermolyne  
Hot Plate and  
Hot Plate Stirrers



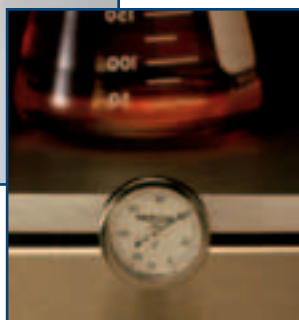
## Industrial Cast Iron Top Hot Plates



Type HP2600 and RC2600

### Industrial Strength!

- Standard or remote control
- Cast iron accommodates metal vessels



*Optional Dial thermometer.  
Used to monitor top plate  
temperature on remote control  
hot plates Type 1900  
and 2600. 1.688" (4.287cm)  
dia. face, .250" (.635cm)  
dia. stem x 2.5" (6.4cm)  
long. 100-500°C  
(200-1000°F) scale range.  
Part number: MEX140*

### Product Description

- Stainless-steel case for structural strength to support heavy loads of up to 25 lb. (11.3 kg).
- A choice of standard or remote control models.
- Cast-iron top resists physical abuse and thermal shock.
- Embedded heating elements transfer heat across the entire top plate surface.
- Temperature uniformity at 150°C (300°F): ±10°C (± 18°F).
- Temperature stability at 150°C (300°F): ± 1°C (±1.8°F).
- Uniform temperatures to 482°C.

### Standard HP2600 units offer:

- Four position temperature switch for low, medium low, medium and high settings.

### Remote control RC2600 units offer:

- Five foot extension cord allows control to be placed outside of fumehood.
- Temperature selection provided by a percentage input controller.
- Top plate has thermometer well to accommodate optional thermometer.

### Application

- Acid or base digestions—use glass or metal vessels
- Evaporation of large volumes of aqueous solutions

### PRODUCT SPECIFICATIONS

Type	Heating Surface Inches (cm)		Overall Dimensions Inches (cm)			Shipping Weight Lb. (kg)
	W	D	W	H	D	
HP2600	9.0 (22.9)	9.0 (22.9)	9.0 (22.9)	6.25 (15.87)	10.0 (25.4)	17.0 (7.7)
RC2600	9.0 (22.9)	9.0 (22.9)	9.0 (22.9)	6.25 (15.87)	10.0 (25.4)	18.0 (8.2)

### ORDERING INFORMATION

Model #	Volts	Electrical (50/60 Hertz)		Operating Temp Range		US List Price
		Amps	Watts	°C	°F	
HP2625R	120	9.0	1080	218-482	425-900	\$509.00
HP2620R	240	4.5	1080	218-482	425-900	\$509.00
RC2625R	120	9.0	1080	100-482	212-900	\$644.00
RC2620R	240	4.5	1080	100-482	212-900	\$644.00