



DATALOGGER WITH DATA LAB GRAPHICAL SOFTWARE 840051

Portable datalogger captures up to 8,000 data readings in the field from any of the following Sper Scientific Meters:

800002 Narrow Spot IR Thermometer	840033 CFM Anemometer
800008* Advanced Datalogging Thermometer	840035 Advanced pH Meter
800009* Dual Temperature Datalogger	840036 Advanced pH Meter Kit
800010 Type K Thermometer/Calibrator	840039 Conductivity Meter
800014* Humidity/Temperature Datalogger	840041 DO Meter with 1 Meter Probe
800043 Ultimate Thermometer	840046 DO Meter with 4 meter Probe
840022 Broad Range Lux/FC Meter	840050 Moisture Meter
840032 Anemometer/Thermometer	840060 Force Gauge
	840062 Torque Meter
	840065 Wide Range Pressure Meter

*software included with purchase of unit

Can be operated manually or set to automatically take samples at any interval between 1 second and 99 hours. Comes with DATA LAB Graphical Software (840053), a RS232 cable for connection to a PC (840055), a cable to connect the Datalogger to any of the above meters, a soft carrying case, 4 AA batteries and full instructions.

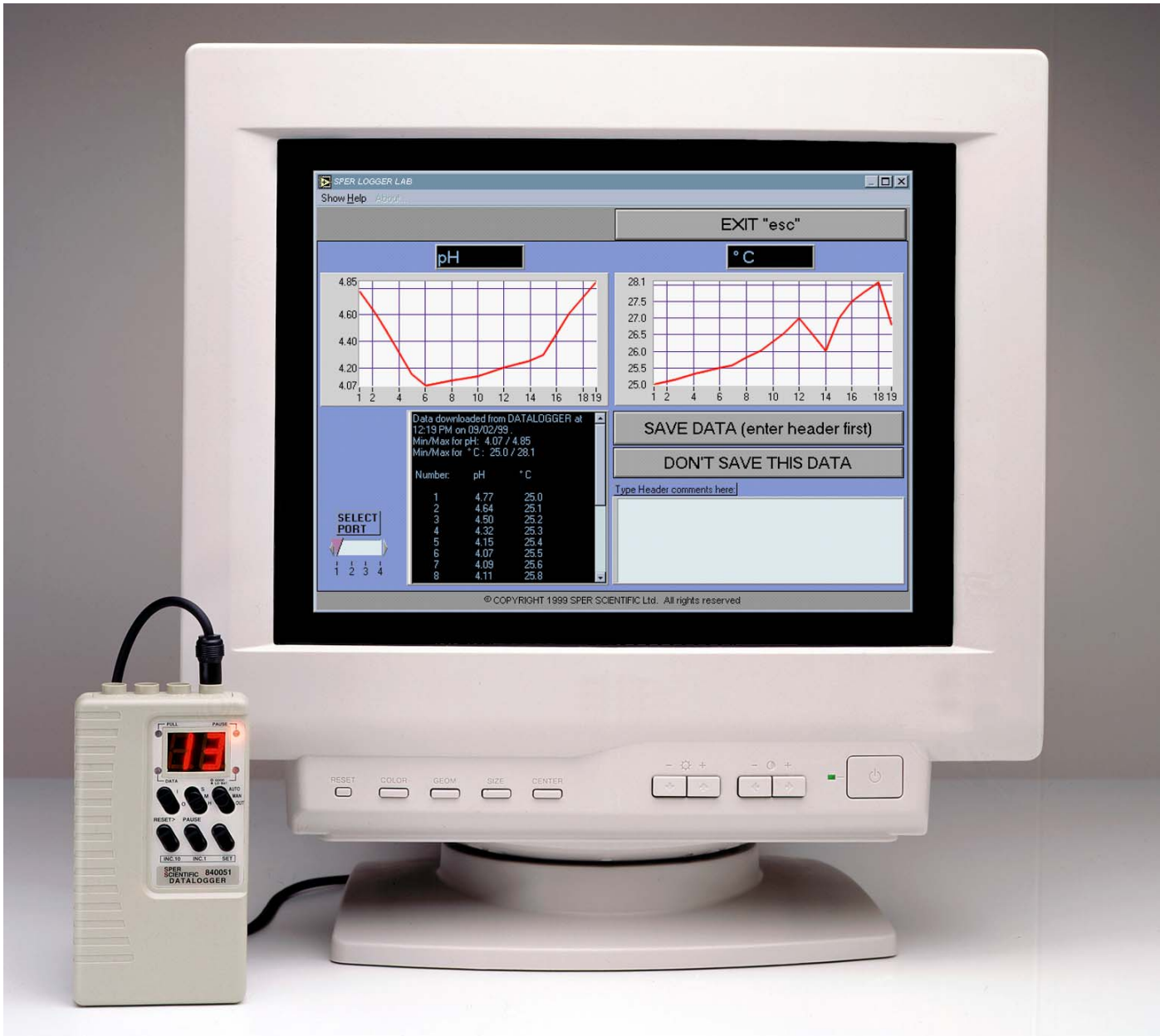
Dim: 5¼" x 2¾" x 1" (131 x 70 x 26mm). Weight 7 oz. (205g).

Rev 09/10/01

DATA LAB GRAPHICAL SOFTWARE 840053

The program is so intuitive, no printed instructions are necessary. The display looks and operates like a bench-top instrument. Operates on Windows™ 95,98, or NT. The software comes on CD rom.

DATA LAB Graphical Software actually contains two programs:



1 . DATALOGGER PROGRAM:

In the field, capture data from any of the meters listed on the first page with Sper Scientific Datalogger 840051 and the software downloads and displays your results. Individual graphs and results tables are automatically created for the main meter parameter and for temperature readings.



2. METER PROGRAM:

In the lab, **DATA LAB** works with all of the meters mentioned on the first page plus:

800002	Narrow Spot IR Thermometer	840028	Graphic Display Sound Level Meter
800005	Digital Type K and J Thermocouple	840032	Anemometer/Thermometer
800006	Dual Type K and J Thermocouple	840033	CFM Anemometer
800008*	Advanced Datalogging Thermometer	840035	Advanced pH Meter
800009*	Dual Temperature Datalogger	840036	Advanced pH Meter Kit
800010	Type K Thermometer/Calibrator	840039	Conductivity Meter
800014*	Humidity/Temperature Datalogger	840041	DO Meter with 1 Meter Probe
800043	Ultimate Thermometer	840046	DO Meter with 4 meter Probe
840003	Anemometer/Thermometer	840050	Moisture Meter
840022	Broad Range Lux/FC Meter	840062	Torque Meter
*software included with purchase of unit		840065	Wide Range Pressure Meter

All of these meters connect directly to your computer's serial port and the meters' readings will be simultaneously shown on analog, digital, and chart recorder displays. The software automatically recognizes the type of meter it is receiving data from, and continuously scales all graphs and analog read-outs. There are separate displays for the main meter parameter and for temperature. Additional displays continuously update min and max readings for both parameters, and real time. The user can choose the duration of the test, number and frequency of samples, number of X axis points on the graph and set audible hi/lo alarms. Data points are logged to a file for later analysis and hard copies of the graphs can be printed out immediately. To connect meters directly to a computer's RS232 port, a cable is necessary and sold separately. Please see the guide on the following page for help in choosing the correct cable for each meter.

RS232 CABLES FOR SPER SCIENTIFIC METERS

To connect meters directly to a computer's RS232 port, a cable is necessary and sold separately. Please see the following guide to choose the correct cable for each meter.

Catalog Number	For Sper Scientific Meters:
800001 *cable included with purchase of unit.	800005 Digital Type K and J Thermocouple 800006 Dual Type K and J Thermocouple 800008* Advanced Datalogging Thermometer 800009* Dual Temperature Datalogger 800014* Humidity/Temperature Datalogger
840044	800043 Ultimate Thermometer
840054	840003 Anemometer/Thermometer 840028 Graphic Display Sound Level Meter
840055 *cable included with purchase of unit.	800002 Narrow Spot IR Themometer 800010 Type K Themometer/Calibrator 840022 Broad Range Lux/FC Meter 840032 Anemometer/Thermometer 840033 CFM Anemometer 840035 Advanced pH Meter 840036 Advanced pH Meter Kit 840039 Conductivity Meter 840041 DO Meter with 1 Meter Probe 840046 DO Meter with 4 Meter Probe 840050 Moisture Meter 840051* Dataloger 840062 Torque Meter 840065 Wide Range Pressure Meter
840056	840060 Force Gauge